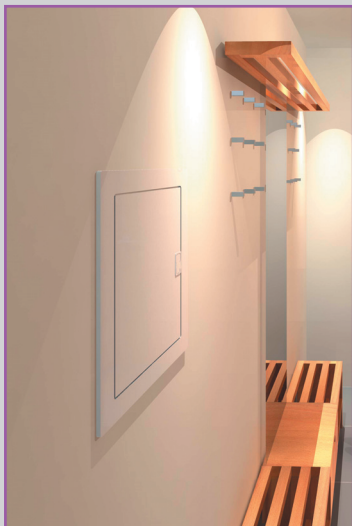


RZA *DISTRIt*on FLUSH-MOUNTING STEEL-PLASTIC DISTRIBUTION BOARDS (IP30)



- for building, residential and similar installations
- can be set into hollow walls
- for mounting devices on DIN EN 60715 rails of width 35 mm
- installed devices: 230/400 V a.c.
- distribution boards consist of a base, mounting frame, front cover, steel door frame, and removable door
- mounting frame can be adjusted horizontally for correction of an askew mounted cabinet base
- lamellar cable bushings for easy installation of cables from below and above
- self-supporting mounting frame, made from DIN rails, allows easily to fill distribution board outside the base
- resistance rating class: II



Distribution board assembly

Plastic lamellar bushings

- for easy installation of wires
- location on the top and bottom of the base

Insulated PE and N terminal strip

- standard equipment

Sturdy plastic base

- sturdy plastic distribution board base prevents deformation during installation into the wall
- secured by suitable door handle plates and ribbing in the distribution board base

Front cover

- with cut-outs for 12 modules

Steel door frame

- easy change of door opening from right/left

Mounting frame

- sufficient space behind the DIN rail (12 mm) allows easy extension of wires

Steel-sheet door

- with 180° opening

Products identification


Number of rows	Maximum number of modules in row in a row (total) ¹⁾	Type	Product code	PE and N terminal strips	Weight [kg]	Maximum power loss [W] ²⁾	Packing (pcs)
1	12	RZA-12N	33363	PE 12x10mm ² + 4x25mm ²	2.1	30	1
				N 12x10mm ² + 4x25mm ²			
2	24	RZA-24N	33364	PE 12x10mm ² + 4x25mm ²	2.9	33	1
				N 12x10mm ² + 4x25mm ²			
3	36 (38)	RZA-36N	33365	PE 18x10mm ² + 6x25mm ²	3.8	35	1
				N 18x10mm ² + 6x25mm ²			
4	48 (50)	RZA-48N	33366	PE 18x10mm ² + 6x25mm ²	4.6	40	1
				N 18x10mm ² + 6x25mm ²			

¹⁾ 1 module = 17.5 mm

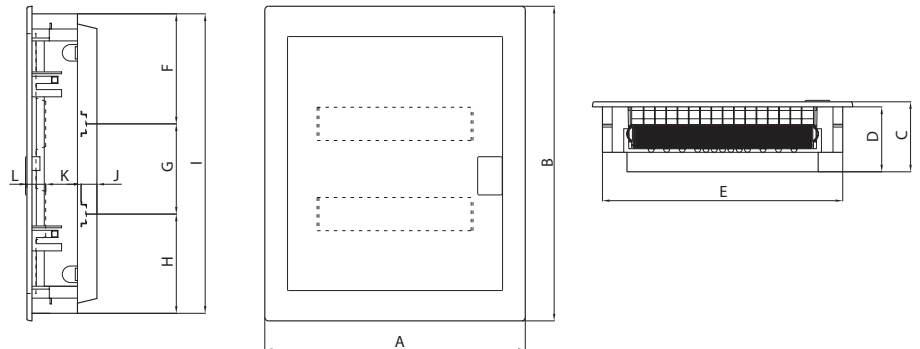
²⁾ ΔT = 30 K (difference between internal and external temperature)

RZA *DISTRIt*on FLUSH-MOUNTING STEEL-PLASTIC DISTRIBUTION BOARDS (IP30)

Specifications

Type	RZA	
Standards	EN 60439-1, EN 60439-3, EN 62208	
Approval marks		
Colour	white	
Protection	IP30	
Rated values of devices used	400 V	
Device rail	DIN EN 60715 rail of width 35 mm	
Resistance rating class	II	
Door	opening	left/right
	version	non-transparent
Material	flame-retardant thermoplastic - glow wire test	max. 650 °C

Dimensions

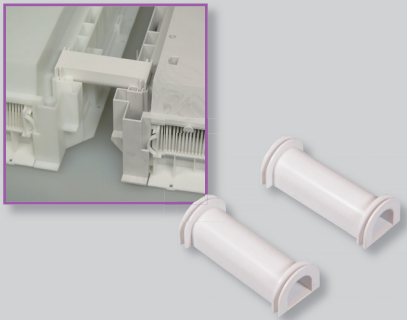


RZA Distribution boards [mm]

Size	A	B	C	D	E	F	G	H	I	J	K	L
RZA-12N	361	311	97	90	333	153	-	137	290	20	49	25
RZA-24N	361	436	97	90	333	153	125	137	415	20	49	25
RZA-36N	361	581	97	90	333	173	2x125	137	560	20	49	25
RZA-48N	361	706	97	90	333	173	3x125	137	685	20	49	25

RZA *DISTRIt*on FLUSH-MOUNTING STEEL-PLASTIC DISTRIBUTION BOARDS (IP30)

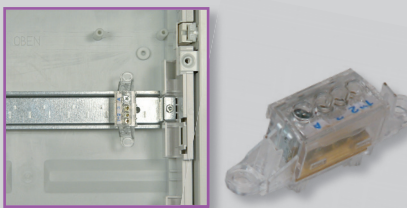
ACCESSORIES FOR *DISTRIt*on STEEL-PLASTIC DISTRIBUTION BOARDS



Set for joining distribution boards

- RZA accessories
- for horizontal connection of distribution boards
- 1 set: 2 pcs

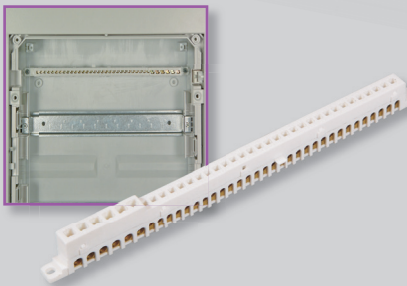
Type	Product code	Weight [kg]	Packing [pcs]
PD-RZA-SPC	33481	0.032	2



Terminal strip

- RZA accessories
- PD-RZA-SB4 installation on DIN rail/base
- PD-RZA-SB36 for higher number of N, PE wires

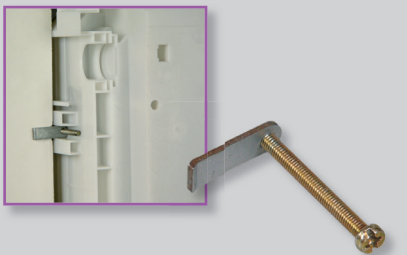
Range	Type	Product code	Weight [kg]	Packing [pcs]
1x25 mm ² + 3x10 mm ²	PD-RZA-SB4	33482	0.029	1
30x4 mm ² + 6x16 mm ²	PD-RZA-SB36	33480	0.190	1



Mounting anchors

- RZA accessories
- mounting anchors for hollow walls
- 1 set: 4 pcs

Type	Product code	Weight [kg]	Packing [pcs]
PD-RZA-DH	33483	0.032	4



Lock

- RZA accessories
- for locking distribution board, 2 keys
- installation below swivel handle

Type	Product code	Weight [kg]	Packing [pcs]
PD-RZA-UZ	33479	0.018	1